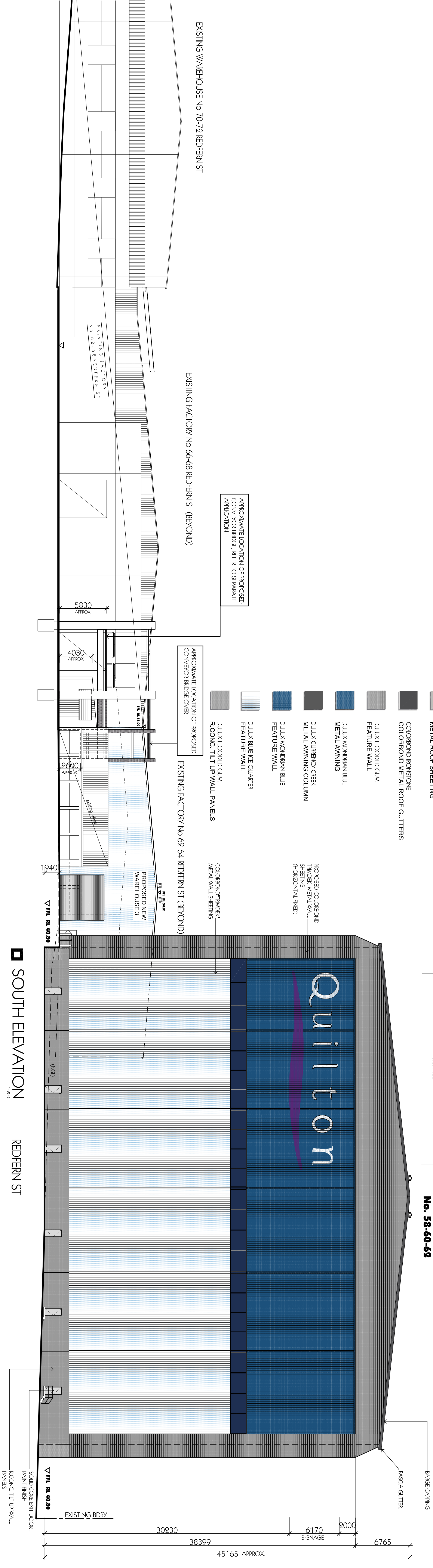


PROPOSED COLOUR SCHEDULE

- COLORBOND WINDSPRAY METAL ROOF SHEETING
 - COLORBOND IRONSTONE COLORBOND METAL ROOF GUTTERS
 - DILUX FLOORED GUM FEATURE WALL
 - DILUX MONSIEUR BLUE METAL AWNING
 - DILUX CURENCY GREEK METAL AWNING COLUMN
 - DILUX MONSIEUR BLUE FEATURE WALL
 - DILUX BLUE ICE QUARTER FEATURE WALL
 - DILUX FLOORED GUM R/C CONC. TILT UP WALL PANELS
- APPROXIMATE LOCATION OF PROPOSED CONVEYOR BRIDGE, REFER TO SEPARATE APPLICATION
- APPROXIMATE LOCATION OF PROPOSED CONVEYOR BRIDGE OVER

SOUTH ELEVATION
1:300

REDFERN ST



Issue	Description	Date	Drawn	Issued
1	Initial Design	17-11-2016	MC	CZ
2	Revised Design	17-11-2016	MC	CZ

General Notes

- 1) All dimensions are to be verified by the builder prior to the commencement of any building work.
- 2) Levels shown are approximate unless accompanied by indicated levels.
- 3) Typical dimensions must be taken in preference to cutting.
- 4) All dimensions are to be taken in preference to cutting.
- 5) Where engineering drawings are included with this plan, preference is to the drawings.
- 6) Dimensions to be determined by the builder with reference to the drawings.
- 7) All services to be located and verified by the builder with reference to the drawings.

Copyright

This drawing is the property of the designer and is not to be reproduced or used in any form without written consent from Algorry Zapfia & Associates Pty Ltd.

North Point

Consultants

ALGORRY ZAPFIA & ASSOCIATES
Building Designers & Consulting Civil & Structural Engineers
Pty Ltd.
a Suite 4, Level 1, 84 Balfour Street, Liverpool NSW 2170
b 84 Balfour Street, Liverpool NSW 2170
c 84 Balfour Street, Liverpool NSW 2170
d 84 Balfour Street, Liverpool NSW 2170
e 84 Balfour Street, Liverpool NSW 2170
f 84 Balfour Street, Liverpool NSW 2170
g 84 Balfour Street, Liverpool NSW 2170
h 84 Balfour Street, Liverpool NSW 2170
i 84 Balfour Street, Liverpool NSW 2170
j 84 Balfour Street, Liverpool NSW 2170
k 84 Balfour Street, Liverpool NSW 2170
l 84 Balfour Street, Liverpool NSW 2170
m 84 Balfour Street, Liverpool NSW 2170
n 84 Balfour Street, Liverpool NSW 2170
o 84 Balfour Street, Liverpool NSW 2170
p 84 Balfour Street, Liverpool NSW 2170
q 84 Balfour Street, Liverpool NSW 2170
r 84 Balfour Street, Liverpool NSW 2170
s 84 Balfour Street, Liverpool NSW 2170
t 84 Balfour Street, Liverpool NSW 2170
u 84 Balfour Street, Liverpool NSW 2170
v 84 Balfour Street, Liverpool NSW 2170
w 84 Balfour Street, Liverpool NSW 2170
x 84 Balfour Street, Liverpool NSW 2170
y 84 Balfour Street, Liverpool NSW 2170
z 84 Balfour Street, Liverpool NSW 2170

Project
PROPOSED EXPANSION TO EXIST. INDUST. DEVEL.
AT LOT 234 DP 1037039, LOT 5 DP 3082 No 58-72 REDFERN STREET,
WETHERILL PARK
Client
ABC Tissue Products
Arch/Eng
DA
Scale @ 81
1:200
Date
JUNE 2016

Project
P3608
Sheet No.
A04
Scale
B